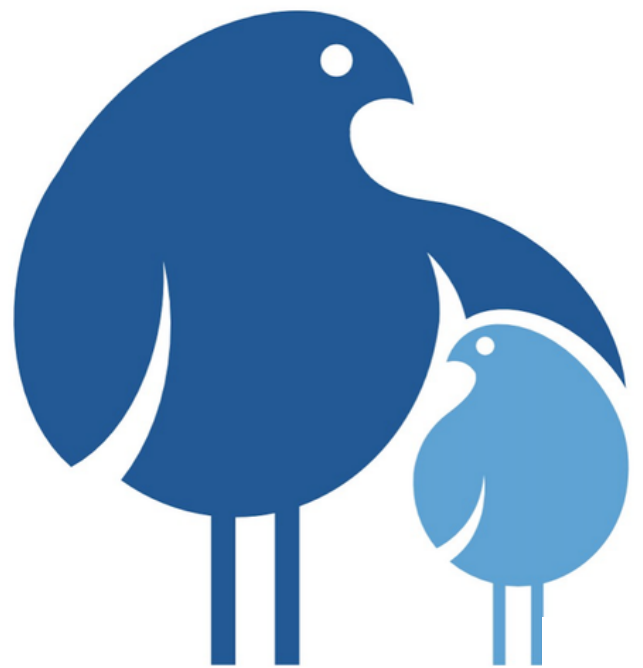


Hammersley Homes

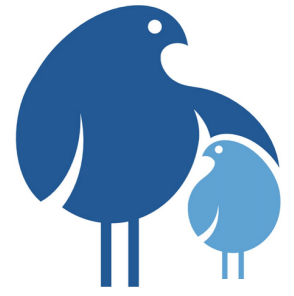
SUPPORTED
HOMES, FOR
LIFE, FOR
ADULTS WHO
SUFFER
FROM ENDURING
MENTAL ILLNESS



Charity Report
January - December 2021

REGISTERED CHARITY NUMBER: 1180673

PRINCIPAL ADDRESS: HAMMERSLEY HOMES 1 WELLINGTON PLACE CAPTAINS
ROW LYMINGTON SO41 9RS



Who we are



Vision

To provide **safety, security, comfort** and friendship **for life** to vulnerable adults with a history of enduring mental health problems – a sector that for some time has been underfunded and ignored by the authorities.



Mission

To provide **long-term supported housing - A home for life,** where the residents could have their own things around them, where they would be amongst friends, and where full-time staff are always on hand.



Values

- We are **committed** to providing life-long support for this vulnerable sector
- We are **resolved** to reduce the number of mental health sufferers who end up in prison because of their illness
- We are **passionate** about what we plan to do and not afraid to challenge in order to improve the lives of the people who will use our services
- We value **diversity** and are committed to everyone having the same opportunity to access our services
- We will treat people with **Care** and **Compassion.**

A message from our Founder, Louise Hallett

We are overwhelmed and delighted with the amazing support we have received for our project through 2021, for which we are extremely grateful. It's enabled us to make terrific progress through the past year: we are really pleased to have our Outreach Programme now fully up and running in our local area, with clients being now regularly referred to us by our local Community Mental Health Teams, and Primary Care Networks.

The purpose of this Scheme is to visit vulnerable adults who suffer from enduring mental health challenges in their own homes, and provide support to help them with any daily challenges they may be struggling with, such as online access, budgeting, dealing with incoming mail, getting bills paid on time, liaising with their care-workers, shopping – or simply going out for a walk or a drive. Anything to bring some friendship and kindness into their lives and reduce the loneliness that they so often live with. This is the kind of support that other vulnerable groups, such as older people, receive as a matter of course, and yet people who live with long term mental distress are too often left to manage on their own.

We have been receiving some great feedback both from our clients and their families, and it's truly wonderful to be hearing about the difference our Outreach Programme is making to a few lives. We are working hard now to expand this service through Hampshire, and eventually to have it available nationwide. Meanwhile, we are getting ever closer to achieving our main goal of opening our first Hammersley Home; it's an ambitious project, and the encouraging and valuable support we have been receiving makes this ever more realistic as we progress.

We have also been looking into work on projects to open day centres for the vulnerable group that we aim to support – somewhere they can go and take part in all sorts of activities and programmes including arts & crafts and training schemes – a place where they can interact socially, make friends and be encouraged in their individual interests. It's becoming ever clearer to us that these facilities are much in demand; such day centres that used to exist in various parts of the country have been closing in recent years due to lack of funds it seems, and we are on a mission to re-establish access to day centres.

A message from our Founder, Louise Hallett

The wonderful support and grants we have received in 2021 have also enabled us to employ our first paid members of staff:

- We now have Annabelle helping part-time in our office, working with me on all aspects of our Charity plans;
- Crystal is our wonderful Outreach Programme Manager who has been doing an invaluable job for us, getting this scheme established with all the training and safeguarding policies in place, sourcing volunteers to do the home visits and provide remote support and liaising with the organisations who refer clients to us; and
- Lisa is working with our amazing volunteers, supporting them in the valuable work they are doing for us on PR & Marketing, Social Media, research and office admin, and bringing in more volunteers all the time.

As we expand our nationwide network of families and carers with loved ones who live with these long-term mental health challenges, we become ever more aware of how desperately needed our services are; there just isn't enough support available from our under-resourced NHS and the much talked about "Integrated Care System" seems still not to be properly working. Every parent with an adult child who they care for, worries about what will happen to their loved one when they are no longer around; who will love and care for them when they are gone? The answer is WE WILL.

Our plans for the year ahead are as ambitious as ever, and with your continued support we are expanding our services to help these vulnerable people who so deserve better lives, and working hard to raise awareness of the issues we champion, so a GIGANTIC THANK YOU to all our supporters!

You are all vital to our work and your support is SO appreciated, both by us and our clients!

Onward and upward!!

2021 At A Glance

£133,000

Money raised through grants, donations and our fundraising campaigns

Key Challenges

To establish and be able to expand our outreach services in the New Forest area and get us closer to opening our first Hammersley Home.



20

Clients enrolled on our outreach service



3

New employees to help us offer more services



2

New trustees, growing our varied professional expertise, dedicated to developing our project, and supported by a team of enthusiastic volunteers.



4

New great additions to our Advisory Board, giving us access to expertise and skills that are of great value to us and our project.



5

Fabulous Patrons who give their public backing and support to our project.

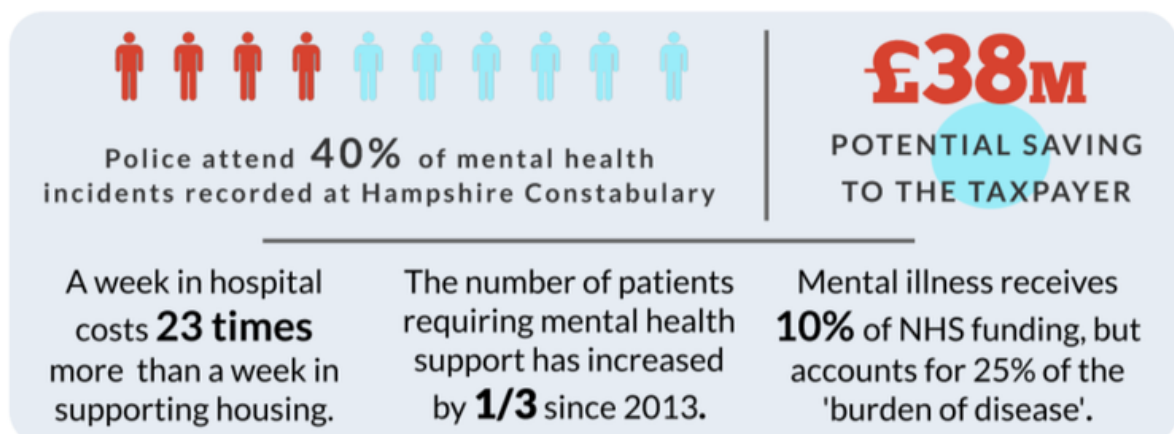
Why is change needed?

Mental illness is estimated to account for at least a quarter of the country's burden of disease, yet it receives just one tenth of NHS funding. We also know that of the 2,000 incidents Hampshire Constabulary records a day, more than 80 are directly related to mental health issues and over 40% of these are attended by the police (February 2018), a huge drain on their already overstretched resources.

Overworked and under-resourced mental health practitioners are leaving the profession in droves, and most vacancies remain unfilled. At the same time patient numbers have risen by a third since 2013, leaving the health and safety of the users of the service and the staff who provide them in serious jeopardy.

In 2010, NHS West Midlands reported that early intervention and home-based care to support people with mental health problems has the potential to save £38 million through the reduction in acute hospital admissions, shorter stays in hospital, and reduced use of high cost intensive interventions. According to the National forum on Mental Health Housing, the average estimated cost of a person in supported housing for a week is £122, compared with an eye-watering £3,000 for a week's stay in hospital.





There is an abundance of evidence to show that high quality, safe, secure and supported housing is fundamental to the quality of life of those with enduring mental health challenges. We have seen it work beautifully in short-term housing solutions - our model is for permanent homes in this forgotten sector. A network of Hammersley Homes will enable vulnerable adults to feel less isolated, lonely or frightened. They will feel the benefits that a sense of belonging brings, reducing the impulse to find meaning to their lives in antisocial and harmful behaviours. It will also enhance the lives of the dedicated families and self-sacrificing carers who will be able to stop worrying quite so much, safe in the knowledge that their loved ones are being appropriately supported. The financial pressure on public services paramedics, hospitals, police, courts and prisons, which has exponentially increased as a result of COVID-19, will also begin to be relieved.



Our impact

We are working towards having a significant impact by enriching the lives of those who suffer from enduring mental ill-health by reducing the confusion and loneliness in their lives and giving them a sense of community and purpose, with activities and outings organised for them.

By keeping them safe and monitoring their medication, and noticing when and if it is not taken, it would be possible to step in and take action before paranoia and psychosis takes a grip, and prevent them from committing the crimes that so often gets them into trouble with the police, which would:

-  Reduce the pressure on our Police services
-  Reduce the pressure on the Courts
-  Reduce the numbers of mental health sufferers being sent to prison
-  Reduce the number of revolving door patients in the NHS Mental Health wards.

All of which would save taxpayers' money, and enhance the lives of the hundreds of thousands of ageing carers, who still have children – many well into middle age - living with them, dominating their lives.

Our timeline 2021



May

We partnered with Dar Louisa, a fully-staffed Moroccan riad south of the Atlas Mountains, with Hammersley Homes receiving 10% of every booking.

October

We launched our first Outreach pod in the New Forest area, with referrals coming in from our local Community Mental Health Teams, Primary Care Networks and from the Citizens' Advice Bureau. Our team offers their friendship and support to vulnerable people who struggle to live independently. We are now working to expand this outreach programme to other parts of Hampshire, and eventually nationwide.

April

We started working with Charitable Travel, which offers wonderful breaks and holidays worldwide, supporting charities like Hammersley Homes with each booking.

July

Our Founding Trustee Louise Hallett and our wonderful supporter and valued ambassador April Edwards (pictured above) completed an 80-mile fundraising walk around the Isle of Wight - in scorching heat, and pouring rain! Their amazing efforts raised almost £70,000!

December

The Big Give brings charities, philanthropists and the public together to multiply their impact, and we were delighted to reach our target!

Our first Hammersley Home appeal



Every family who has lived experience of mental illness will know that it dominates lives. Worry, anxiety and stress are always there. It's relentless. Every parent of someone suffering from these issues worries about how their loved one will manage when they are no longer around, who will love and support them?

Our aim is to provide a solution to these ever-present problems by offering a supported home for life for vulnerable adults who suffer from life-changing mental distress, relieving loneliness and confusion and replacing with friendship and compassion. Residents will be supported to live their best lives by staff who understand the complexities of mental health challenges will promote social inclusion, friendships, strengths and interests, whilst understanding that people will need more focused support when distressed.

We have the opportunity to acquire our first Hammersley Home. Nearly everything is in place – we just need to raise £300,000 for the deposit. Any donation, however small will help us to get there.

NICE reports that "Severe mental illness affects around 0.9% of the population...over 550,000 people registered with a GP had a diagnosis of schizophrenia, bipolar affective disorder or other psychoses in 2017/18" – and these figures continue to grow and don't take into account the thousands who are not registered with the system.

If we can raise £1 for every family who lives with this experience, we would have our deposit to open the first Hammersley Home and be on the way to achieving our ultimate aim – to provide these homes nationwide.

Please support us in this challenge and spread the word. Thank you!

Our campaigns



Three Peaks Challenge!

We are so grateful to Joe Burrow and Zoë Flanagan and their friends who are taking on the Surrey Three Peaks challenge for Hammersley Homes in April. Good luck!



Being part of One Lottery means that with your support we can help to generate regular sustainable funding, whilst giving supporters the chance to win up to £25,000 in a weekly draw. This will enable us to continue to support vulnerable adults who suffer from debilitating enduring mental illnesses, helping them to live their best life – but we couldn't do it without you.



We have signed up for My Giving Circle and are asking all our supporters to vote for us. My Giving Circle gives charities, not-for-profits and community groups – large and small – a chance to receive grants that let them do more in their communities and grow their supporter and donor base by matching them with people most likely to be interested in what they do. It also helps us to raise donations and engage with our supporter base.

Our grants

We would like to say a huge thank you for all the support we receive from Charitable Trusts and Foundations, and from our Local Councils; we are so grateful for the faith that you have had in us and our project.

We look forward to showing you that your faith was well placed as we develop and expand our project into 2022 and beyond:

The Music Sales Charitable Trust

Rockcliffe Charitable Trust

The Arnold Clark Community Fund

Age Unlimited

The Henry Smith Charity

Lady More Charitable Trust

Rory & Elizabeth Brooks Foundation

Lymington & Pennington Town Council

Hampshire County Council

Our financial reports

STATEMENT OF FINANCIAL ACTIVITIES YEAR ENDED 31 DECEMBER 2021 (Incorporating Income and Expenditure Account)

	Note	2021 Unrestricted Funds	2021 Restricted Funds	2021 Total Funds	2020 Unrestricted Funds	2020 Restricted Funds	2020 Total Funds
INCOME							
Donations & gift aid	3	29,008	11,200	40,207	19,769	-	19,769
Other trading activities	4	54,960	-	54,960	31,299	-	31,299
Income from Charitable Activities							
Charitable activities	5	15,500	23,300	38,800	-	-	-
Income from Investments							
Bank interest	6	6	-	6	-	-	-
Total Incoming Resources		99,473	34,500	133,973	51,068	-	51,068
Expenditure on:							
Fundraising	7	16,734	9,564	26,298	24,771	-	24,771
Charitable activities	8	15,681	8,744	24,426	26,359	-	26,359
Total Expenditure		32,416	18,308	50,724	51,131	-	51,131
Net income / expenditure before		67,058	16,191	83,249	(63)	-	(63)
Transfer between funds		981	(981)	-	-	-	-
Net movement in funds		68,038	15,211	83,249	(63)	-	(63)
Reconciliation of funds:							
Total funds brought forward at 31 March 2020		35,270	-	35,270	35,333	-	35,333
Total funds carried forward at 31 March 2021		103,309	15,211	118,519	35,270	-	35,270

All figures relate to continuing operations.

There were no recognised gains or losses for the current or previous period other than as stated above. The movement in funds is due to the net incoming resources for the year.

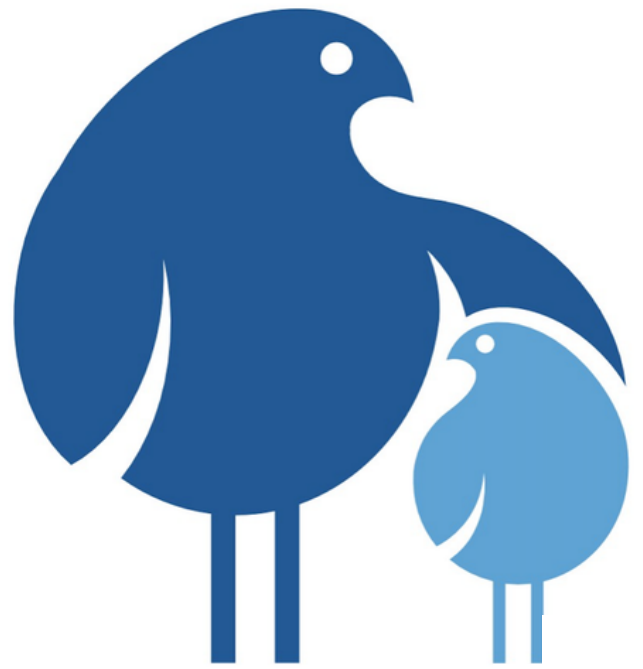
Our financial reports

BALANCE SHEET AS AT 31 DECEMBER 2021

		2021		2020	
	Note	£	£	£	£
FIXED ASSETS					
Tangible	11	1,540		1,817	
			<u>1,540</u>		<u>1,817</u>
CURRENT ASSETS					
Debtors and prepayments	12	11,651		3,354	
Cash at bank and in hand		<u>108,832</u>		<u>32,800</u>	
		<u>120,483</u>		<u>36,154</u>	
CREDITORS: Amounts falling due within one year					
	13	<u>3,504</u>		<u>2,701</u>	
NET CURRENT ASSETS			116,979		33,453
NET ASSETS			<u>118,519</u>		<u>35,270</u>
FUNDS					
Unrestricted	15		103,309	35,270	
Restricted	15		15,211	-	
TOTAL FUNDS			<u>118,519</u>		<u>35,270</u>

Hammersley Homes

SUPPORTED
HOMES, FOR
LIFE, FOR
ADULTS WHO
SUFFER
FROM ENDURING
MENTAL ILLNESS



Charity Report
January - December 2021

SIGN UP FOR OUR NEWSLETTER ON THE BOTTOM OF OUR HOMEPAGE [HERE](#)

REGISTERED CHARITY NUMBER: 1180673

PRINCIPAL ADDRESS: HAMMERSLEY HOMES 1 WELLINGTON PLACE CAPTAINS
ROW LYMINGTON SO41 9RS